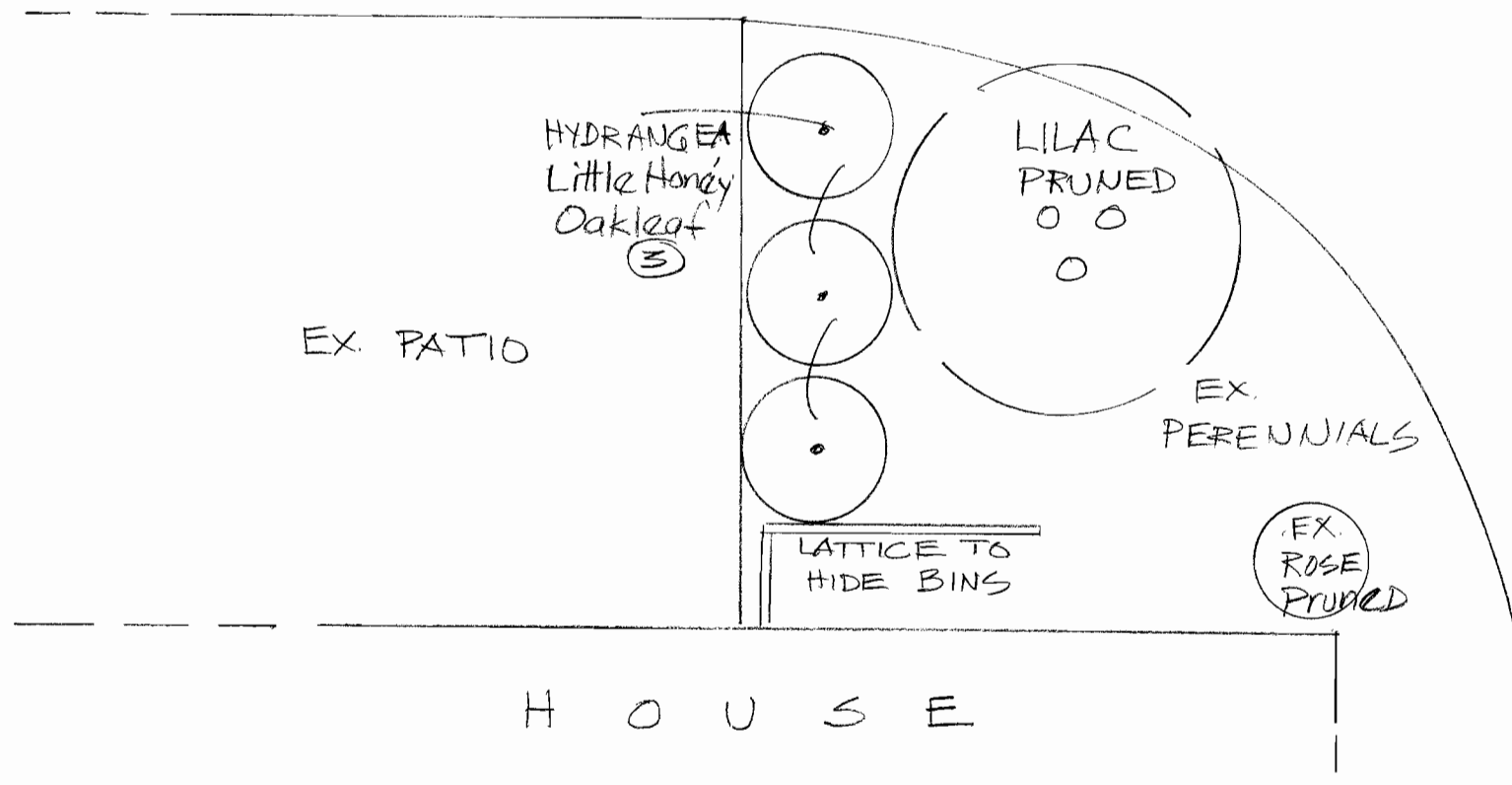


PLANT KEY:

- AL = Alchemilla - 4
- ACP = Achillea Pink Ex. - 2
- BX = Boxwood
- GM = Green Mountain - 1
- WG = Winter Gem - 1
- CP = Curly Parsley - 8
- CH = Chive - 2
- CJT = Coreopsis Jethro Tull - 4
- CORM = Coreopsis Moonbeam - EX - 2
- DEL = Delphinium
- BB = Blue Bird - 1
- KA = King Arthur - 1
- DL = Daylily
- HR = Happy Returns - EX - 4
- P = Peach - EX - 2
- EX = Existing Plant
- EC = Echinacea - 1
- FOX = Foxglove - EX - 1
- GB = Green Basil - 4
- HS = Heuchera Snow Angel - 2
- HV = Heuchera Vesuvius = 4
- LAM = Lavender Munstead - 2
- LAP = Lavender Provence - 2
- NEP.WL = Nepeta Walkers Low - 3
- ORE = Oregano - EX - 2
- MO = Monarda - EX - 1
- PB = Purple Basil - 4
- PH = Phlox
- DP = Deep Pink - EX - 2
- PURP = Purple
- ROSE KO = Knockout Rose - 5
- VI = Viola - 6
- THW = Thyme Wooly 3-6

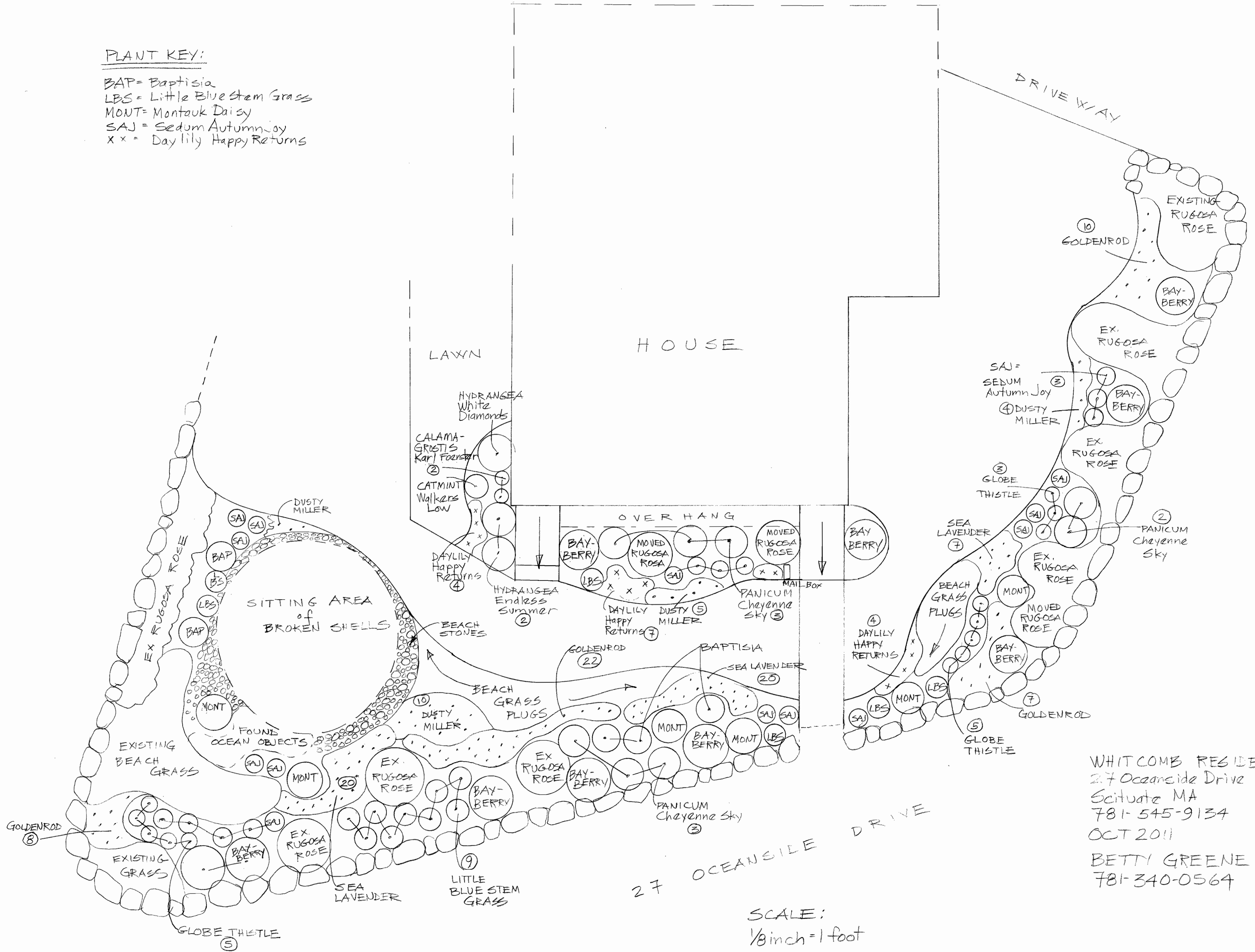
SCALE:
1/4 inch = 1 foot



PROVOST RESIDENCE
 41 BOX ST
 MARSHFIELD MA
 781-837-6076
 FEB. 2012
 BETTY GREENE - 781-340-0564

PLANT KEY:

- BAP = Baptisia
- LBS = Little Blue Stem Grass
- MONT = Montauk Daisy
- SAJ = Sedum Autumn Joy
- x x = Day lily Happy Returns



WHITCOMB RESIDENCE
 27 Oceanside Drive
 Scituate MA
 781-545-9134
 OCT 2011
 BETTY GREENE
 781-340-0564

SCALE:
 1/8 inch = 1 foot

STREET

